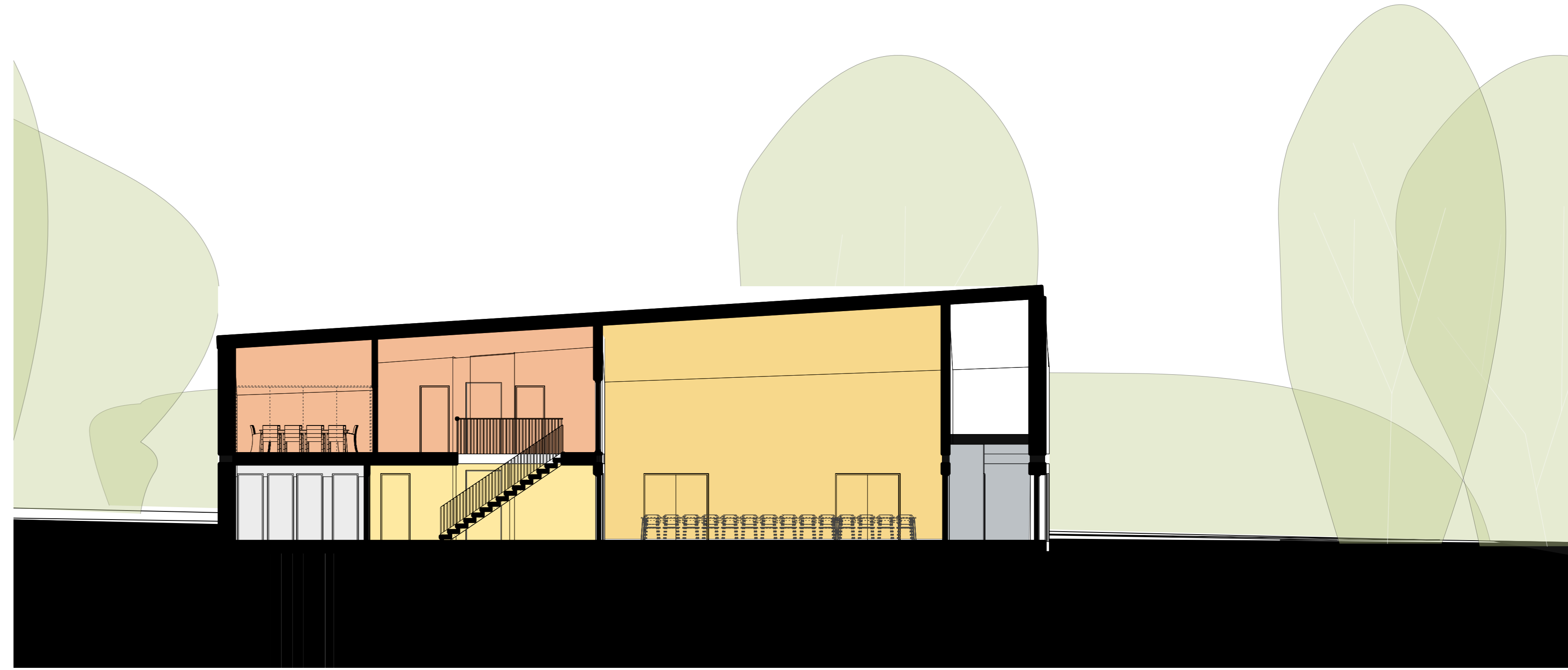
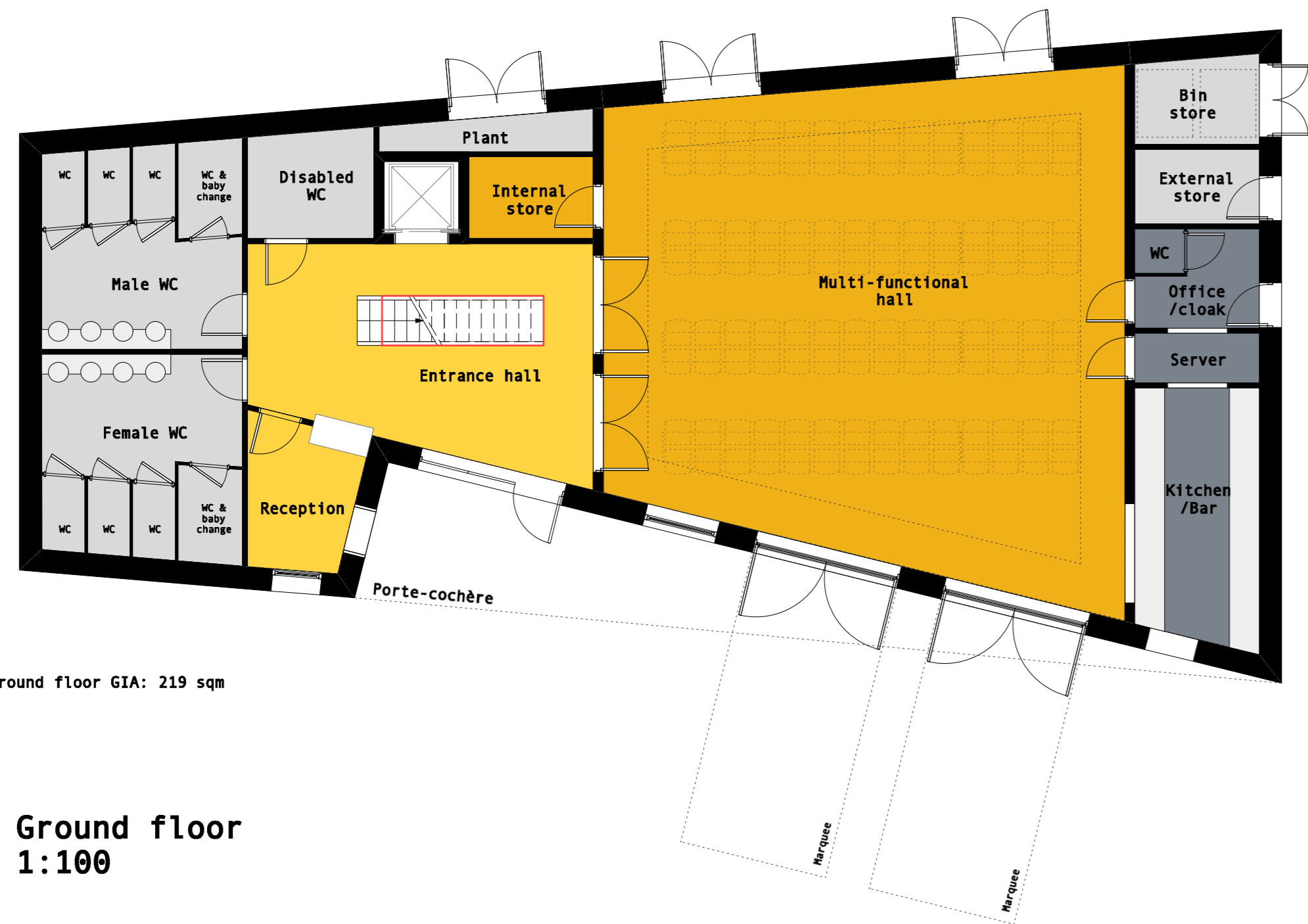


First floor GIA: 73.4 sqm

First floor
1:100

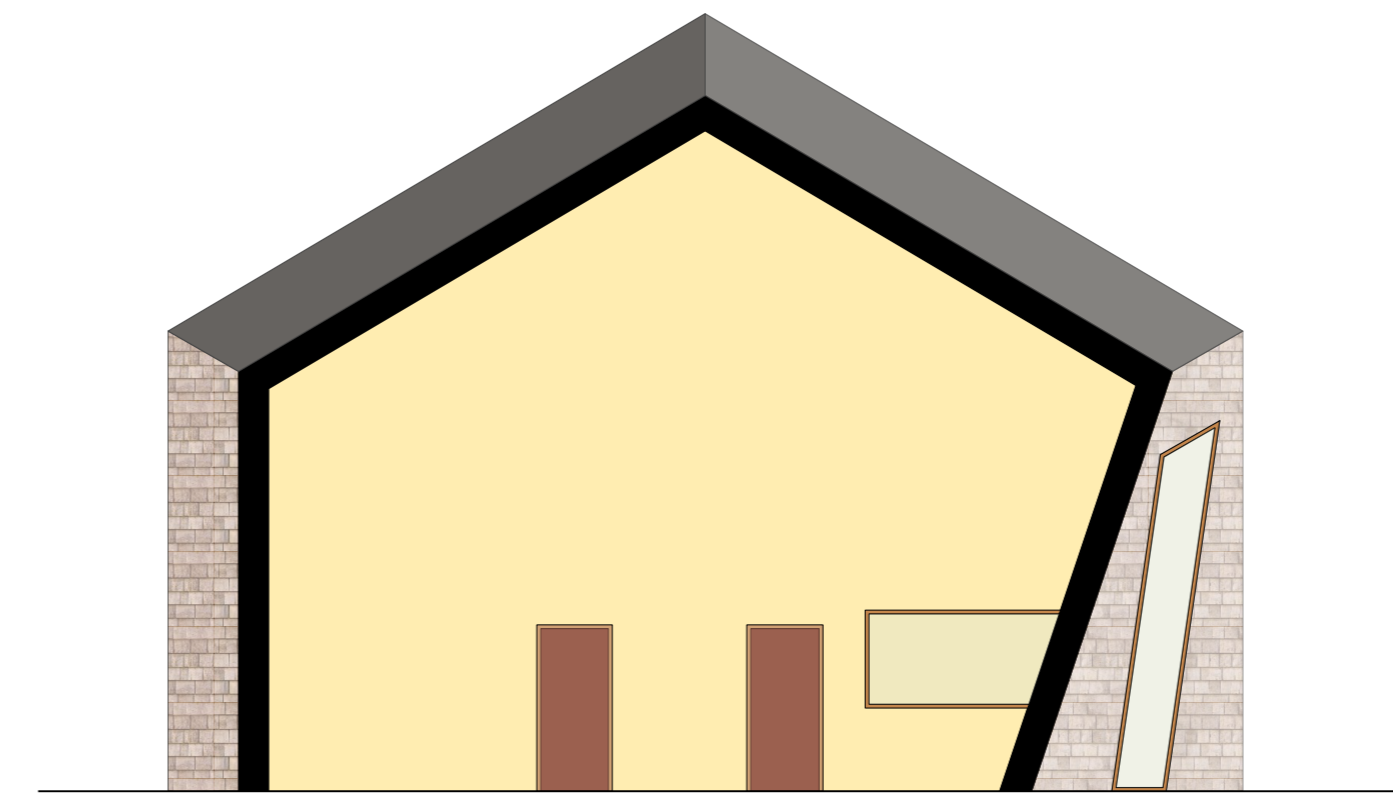


Long section
1:100

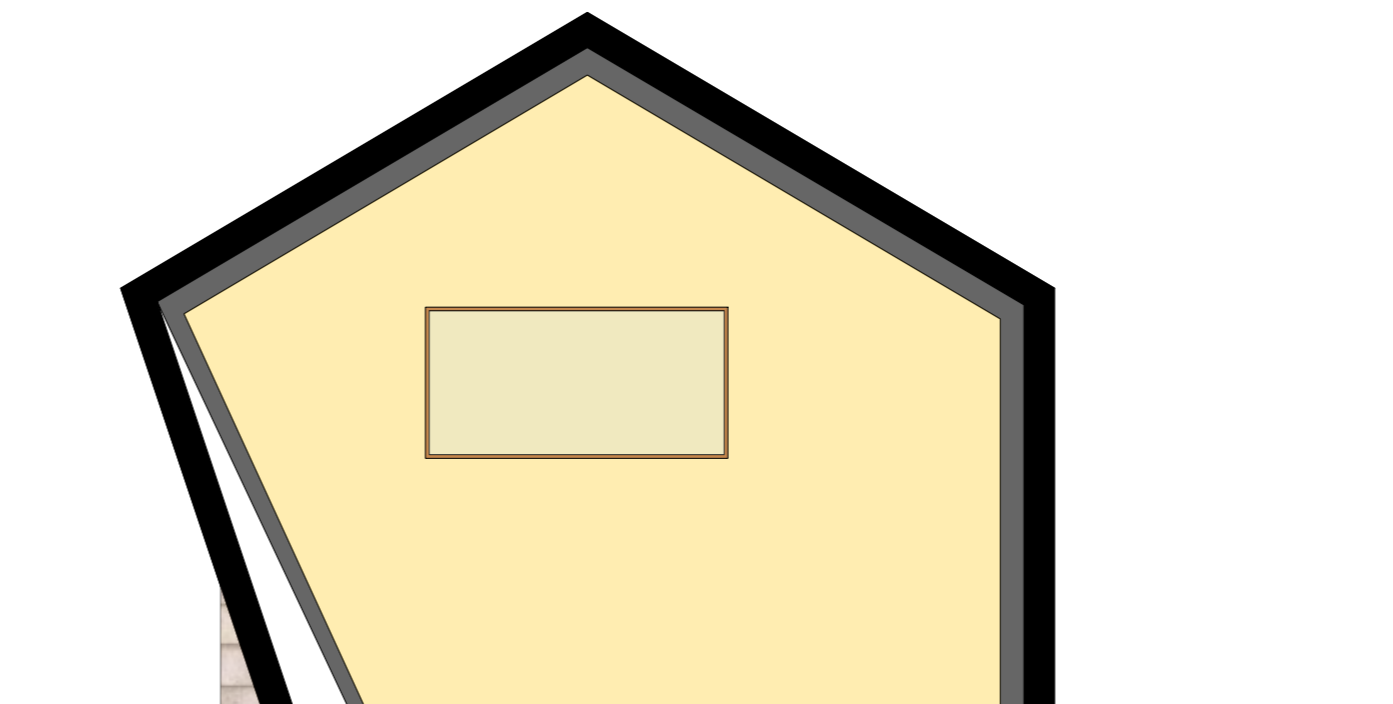


Ground floor GIA: 219 sqm

Ground floor
1:100



Section looking east
1:100



Section looking west
1:100

Rev	Issue Date	Amendment

HOOPERS ARCHITECTS

Hoopers Architects
5 Cromwell Court
St Peter's Street
Ipswich
IP1 1XG
T: 01473 212646
www.hoopersarchitects.co.uk

Project
Melton Village Hall,
Melton

Client
Melton Parish Council

Drawing
Plans

Scale	Date	Job-Orig-Rev No	
1:100@A1	01/17	3772-SK7	
File	Drawn	Checked	Stage
3772 Village Hall	CJ		Feasibility